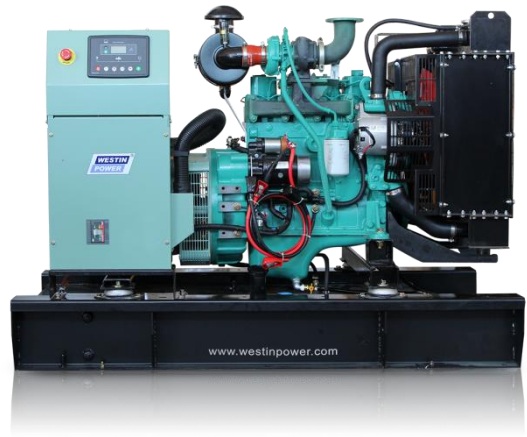


TC70M

50Hz POWERED BY CUMMINS SERIES



TECHNICAL SPECIFICATIONS

DIESEL GENERATING SET 400/230V-50Hz-3Phase

Model	TC70M	
Power(ESP)	kVA/kw	70/56
Power(PRP)	kVA/kw	60/48
Rated Voltage	V	24
Rated Current	A	101
Rated rotation speed	r/min	1500
Power Factor		0.8
Fuel Consumption	Litre/hour	18
Fuel Tank Capacity	Litre	
Noise level	70dB(A)@7m	

WEIGHT AND DIMENSIONS

GEN-Set	Dimension (L*W*H)	Weight
Silent Type	2396mm*1056mm*1670mm	1108kg

STANDARDS:

Genset: GB/T2820—2009,ISO8528

Alternator: MECC-ALTE , ECP32 1L4C

Diesel Engine: CUMMINS , QSB3.9-G2

Standby Power: Continues running at variable load for duration of an emergency. No overload is permitted on these ratings.

Prime Power: Continues running at variable load for unlimited periods with 10% overload available for 1 hour in any 12 hour period.

CONFIGURATION:

Standard: Engine, alternator, cooling system, Base frame (excluding fuel tank), shock absorber, air inlet system, control box (including mains floating charge), plastic fan blades (when the engine and water tank do not bring).

Optional: Base frame (including fuel tank), water jacket heater, fuel water separator, fuel heater, fuel level sensor (only supporting underframe tank), switch box (with switch), power switch, the water level sensor, motor anti condensation heater, automatic fueling system (only supporting base frame including fuel tank), battery frame.

Accessories: Silencer, bellow, exhaust silencing system accessories (with the matching engine), regular battery, starting cord assembly, data of gen-set, random tool (with the matching engine).



ENGINE Specification

Manufacturer: CUMMINS

Model	QSB3.9-G2
Engine speed Rated	1500 RPM
Cylinder /Arrangement	4/ L
Displacement	3.9L
Bore and Stroke	102 mm×120 mm
Compression ratio	17.3 : 1
Max. stand by power at rated RPM	70 KW
Frequency regulation , steady state	≤1%
Governor : type	Electronically-control high pressure common rail
Aspiration and Cooling	Turbocharged & After-cooled

Exhaust System

Exhaust gas flow	188L/s
Exhaust temperature	465°C
Max back pressure	10kPa

Fuel System

Fuel consumption100% (of the Prime Power)	18L / h
Fuel consumption75% (of the Prime Power)	14L / h
Fuel consumption50% (of the Prime Power)	10L / h
Fuel consumption110% (of the Prime Power)	19L / h

Oil system

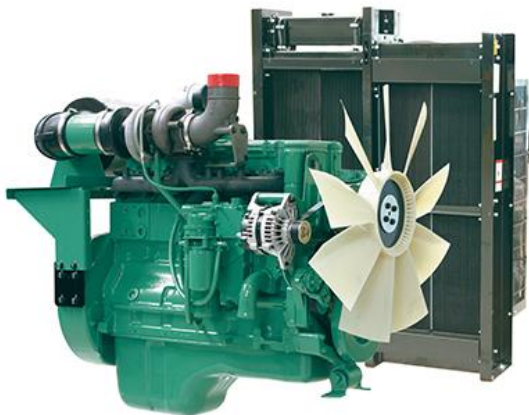
Total oil capacity w/filters	10.9L
------------------------------	-------

Air intake

Engine air flow	89 L/s
-----------------	--------

Coolant System

Engine capacity	7 L
Max water temperature	104°C
Thermostat	82-95°C



- Cummins engines with advanced design, reliable performance, durable operation.
- Alloy-steel and connecting steel-lever, high durability
- High combustion efficiency and low fuel consumption, work continuously
- P/T pump injection technology, low cost, completely combustion

Note: All data sheets are for reference only
and subject to change without prior notice.



ALTERNATOR Specification

Manufacturer: MECC-ALTE

Type	ECP32 1L4C
Number of phase power	3
Factor (Cos Phi)	0.8
Pole	4
Bearing	1
Coupling	Direct
Exciter type	Brushless
Insulation : class , temperature rise	H / H
Degree of protection	IP23
AVR model	DSR
Altitude	≤1000m
Winding Pitch	2/3
Winding Leads	12

FEATURES

- Leading reality in the national scene, fortified by sixty years of experience in the electro mechanical field, Mecc Alte is today at its height in the world production of synchronous alternators.
- Committed daily to research, development and updating activities, Mecc Alte is a testimony to constant improvement in all areas from technology, organisation and quality with its ISO 9001 certification.

STANDARDS

- Marine certifying institutions
Korean Register of Shipping, American Bureau of Shipping, China Classification Society, Germanischer Lloyd, Nippon Kaiji Kyokai, Russian Maritime Register of Shipping.
- Product certifying institutions
CSA International
Underwriters Laboratories
Istituto Marchio di Qualità

Note: All data sheets are for reference only and subject to change without prior notice.



Control Panel

Model: DSE 6020

AUTO START & AUTO MAINS FAILURE CONTROL MODULES

DIMENSIONS

OVERALL

216mm x 158mm x 42mm
(8.5" x 6.2" x 1.6")

PANEL CUTOUT

182mm x 137mm
(7.2" x 5.4")

WEIGHT

400g (0.4kg)



KEY FEATURES

- Back-lit icon LCD display
- Front panel editing
- LED and LCD alarm indication
- Power Save mode
- CAN and Magnetic Pick-up/Alt. versions available (specify on ordering)
- PC and front panel configuration
- 4 Digital inputs
- 3 Analogue inputs
- 6 Outputs (4 configurable on Magnetic Pick-up/Alt., 6 configurable on CAN version)
- Configurable timers and alarms
- Alternative configuration
- Event Log (5)
- Remote Start input
- 3 Phase generator monitoring
- Current monitoring and protection
- Power monitoring(kW, kV A, kV Ar)
- 3 Phase Mains (Utility) monitoring (DSE6020 only)
- Test button (DSE6020 only)
- Battery Voltage monitoring
- Engine pre-heat
- Hours counter
- Comprehensive shutdown or warning on fault condition
- Automatically transfers between mains (utility) and generator power (DSE6020 only)
- Hours counter provides accurate information for monitoring and maintenance periods
- User-friendly set-up and button
- Multiple engine parameters are monitored simultaneously
- Module can be configured to suit individual applications
- Compatible with a wide range of CAN engines
- Uses DSE Configuration Suite PC software for simplified configuration
- IP65 rating (with optional gasket) offers increased resistance to water ingress
- Licence-free PC software

KEY BENEFITS